



Musquodoboit Valley Rifle and Revolver Club

Range Safety Booklet revision 2.42

29th May 2019

Approved by the Executive of MVRRC





List of Contents

Introduction/Scope	5
Club details.....	5
Definitions	6
General Safety Rules.	7
MVRRRC Range Map (not to scale)	7
Holsters- new heading.....	8
Documentation and Transporting	10
General Member duties	11
Targets – reorganized	11
Aerial targets and Clays –New heading	12
Range Safety.....	13
Round safety and ricochet hazards	13
Safety equipment	14
Caliber restrictions	16
Range Caliber table	16
Events	17
Disciplinary guidelines.....	18
Safety breaches	18
General Range Safety Rules.....	20
Specific Range Safety Rules	21
Rifle Range 1 Firing Line 1(300).....	21
Rifle Range 1 Firing Line 2(200).....	21
Rifle Range 2 inside (100yards)	21
Rifle Range 2A outside (100/200yards)	21
Rifle Range 3 outside (50 yards).....	21



<u>Rifle Range 4 Firing line 1</u>	21
<u>Rifle Range 4 Firing line 2</u>	21
<u>Rifle Range 4 Firing line 3 Pistol 4</u>	22
Rifle Range 5 –closed	22
Pistol Range 1	22
Pistol Range 2	22
Pistol Range 3	23
Pistol 5	23
Fixed Shotgun Position	23
MVRRC Incident Occurrence Levels	25



National range rules

This Range Safety Booklet is not intended to be exhaustive for range safety at the MVRRC range. National range laws also apply at the MVRRC. In addition, when a specific range is HOT, the commands and directions of the range officer on the range also apply.”



Introduction/Scope

The aim of this book is:

To standardize the safety rules in use at the club and remove any ambiguity.

To help ensure a safe and enjoyable shooting experience for all members and guests.

To ensure that all Members are aware of these rules, so that they can be enforced in a fair manner.

To ensure that the club has no negative impact on neighbors.

Club details

The contact details of the Executive Members and Directors are listed on the website

Mailing address:

P.O. Box 150, Middle Musquodoboit, Nova Scotia, B0N 1X0

Membership mailing address:

MVRRC, PO Box 163, Brookfield NS, B0N 1C0

Club Address:

1000 Glenmore Road, Middle Musquodoboit, Nova Scotia

Website:

www.mvrifleandrevolverclub.com

Email address:

info@mvrcc.com

Emergency contact:

Call **911** in the event of an emergency while at the club.



Definitions

Unloaded Magazine removed unless it is a “fixed” magazine, and no cartridge in the chamber or the fixed magazine.

Encased means unloaded, magazine removed, and the case catches or zips are closed.

Permitted Holsters are drop leg and hip holster.



N.B. Button release holsters such as SERPA are not allowed.



TACTICAL **LINK**

N.B. Tactical slings not allowed.

Racked -rifle unloaded, magazine out if possible and action held open and placed in a rack, action may be held open with a spent casing if necessary.

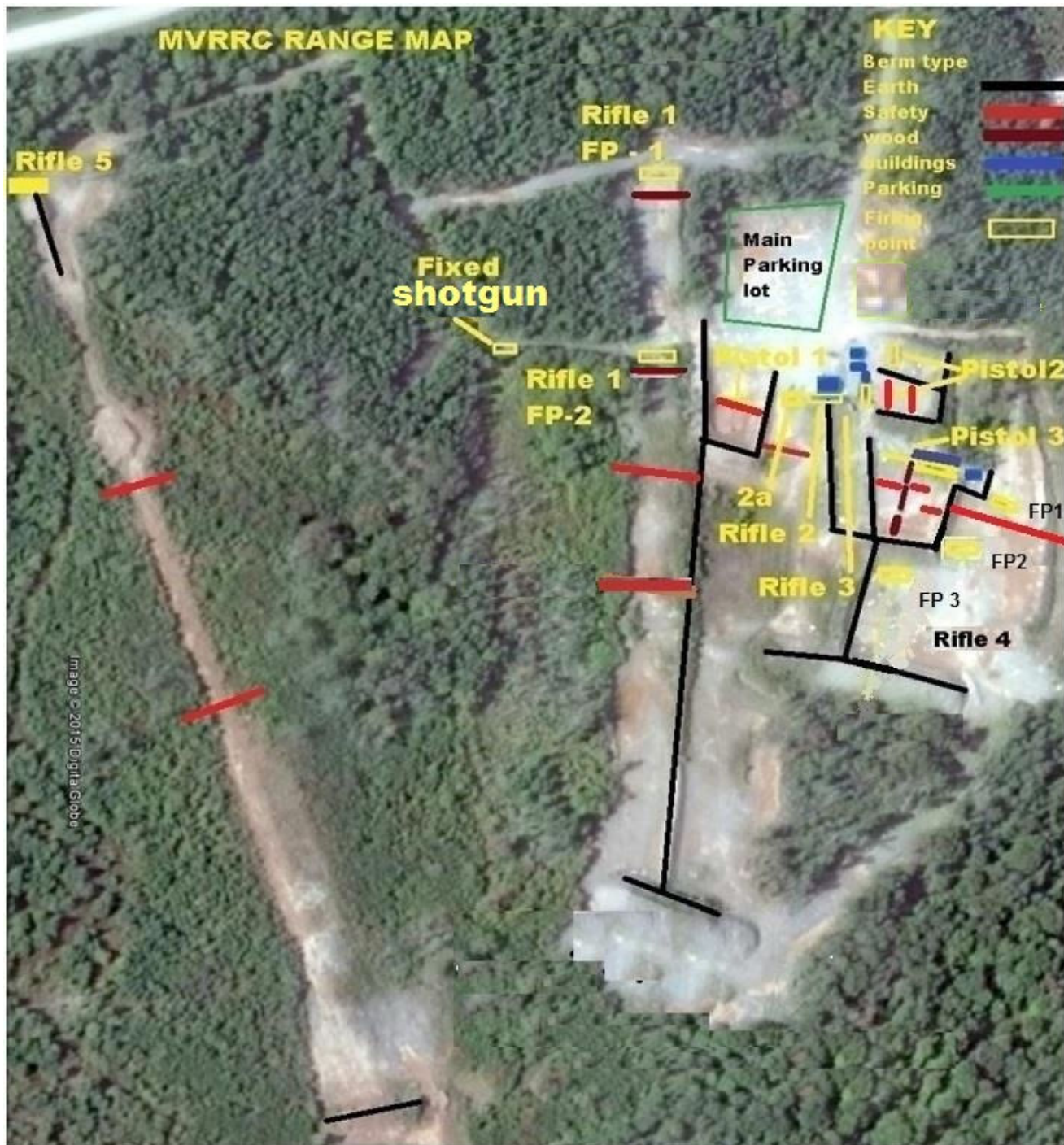
Protected area the area of the backstop that all rounds must impact. It may be protected by sand, loam, or other non ricochet surface.

Benching removed



General Safety Rules.

MVRRC Range Map (not to scale)



Rifle range 1 can only be shot from one firing point at any time – 100m berm removed

Rifle range 1 and fixed shotgun cannot be used at the same time

Rifle range 4 can only be shot from one firing point at any time

Rifle 5 – closed at present



Shooting safety

1. Only Members who hold the appropriate licenses may bring prohibited firearms and devices onto the range; all MVRRC safety rules must be complied with.
2. Prohibited ammunition such as armour piercing, incendiary and explosive is NOT allowed on the range.
3. Before any activity or equipment that varies from that given in this safety booklet is carried out or used, permission MUST be granted by the President in consultation with the Executive.
4. Shooting safety is every members concern. RO's, club directors and members have the power to ask to see membership cards. Failure to carry your card is an offence and can get you expelled from the range. It may also result in disciplinary action.
5. Any offence, which is in the opinion of the RO or a club director causes a serious safety breach can result in the individual being asked to leave the range and will result in disciplinary action.
6. Firearms are NOT to be handled in the parking lot.
7. Firearms must be uncased and / or unlocked on a range with a red flag up at a shooting point or, and then racked or holstered until used. Safety benches are to be used only during club sanctioned matches
8. When people move forward to check targets (etc) the following applies:
 - a. All firearms must be unloaded Firearms can be racked, cased or carried forward, on a shoulder sling, in a permitted holster or encased. ~~Benched removed~~
9. Unloaded fire arms may be transported between ranges as follows:

They may be carried muzzle up with the action open.

Break action shotguns must be open or "broken".

They may be in a permitted holster.

They may be encased.
10. Firearms are allowed in the clubroom only in the following conditions:

They are unloaded and encased.

They are unloaded in a hip holster.

For Club Sanctioned training courses

Holsters-

1. If it is your plan to draw a loaded firearm from a holster, your holster qualification card must be carried on the range
2. If there is any doubt that any device used to hold or transport a firearm is not permitted, check with the President in consultation with the Executive before use.



3. Any Member or Guest may use an approved holster to transport an unloaded firearm but only a holster qualified person may draw a loaded firearm from a holster when shooting
4. Permitted holsters must contain the pistol securely; permitted holsters are:
Hip Drop leg
5. Firearms in drop leg holsters are not allowed in the club house.
6. Only people who have completed an approved holster course may draw a loaded pistol from a holster.
7. Approved holster courses are:
NFA Holster qualification IPSC Black badge Security Company carry permit
Police training (current) Sherriff, DNR Fishery Police
Other current Federal/Provincial carry permit
8. The holsters listed below are not allowed:
Cross draw Ankle holsters SERPA
Shoulder Holsters Holsters worn at the small of the back
IWB Holsters / Conceal style Holsters (unless approved via Executive)
9. Only ON DUTY Police Officers may have loaded pistols in holsters as they move around the range during the course of their duties.



Documentation and Transporting

All Members must show membership card when requested.

All members must have all legal documentation on their person while using the range these documents are:

Non-Restricted

PAL card

Membership card

Restricted/Prohibited

Membership card

RPAL card

Registration document

All applicable certification for devices e.g. Prohibited license and qualifications e.g. holster qualification.

Holster Qualification

If it is planned to draw a loaded firearm from an approved holster, the Member or Guest must have their Holster qualification with them.



General Member duties

1. It is the member's responsibility to keep up to date with safety revisions either by email, on the MVRRC website, or those posted in clubhouse.
2. It is the member's responsibility to ensure that both club and range flags and the "open" sign are displayed and the gate is open when shooting is in progress. **THIS IS A LEGAL REQUIREMENT.**
3. It is the last member to leave responsibility to store flags, make the gate sign "closed" and lock gates when all shooting is finished. **THIS IS A LEGAL REQUIREMENT.**
4. All members must sign themselves and guests in. There is a guest insurance fee required for each guest. The fee box is posted in the clubhouse. No individual may be a guest more than 3 times in a calendar year. **THIS IS A LEGAL REQUIREMENT.**
5. During organized shoots the Range Officer's instructions must be followed immediately.
6. A Member shooting on their own is the Range Officer
7. If there are 2 members shooting on a range, then one person must be designated "Range Officer" (RO). **THIS IS A LEGAL REQUIREMENT.** That person controls safe shooting of everyone at that firing line
8. All of their instructions regarding safe shooting must be complied with. This Range Officer does not need to be a "qualified" range officer unless steel plate targets are being used.
9. if there are 3 or more at a given firing point the appointed RO cannot shoot at the same time as the others
10. 8. A qualified Range Officer is someone who has completed the MVRRC range officer course or NFA approved training course.

Targets

1. Targets must never be placed on ground baffles or up range of ground baffles
2. All targets should be made from biodegradable materials (cardboard or paper, etc.) and must be fixed to a proper target frame. Any other types of target may only be used with the Executives permission.
3. Target placement during organized matches will be approved by the Executive if it varies from the requirements listed in the rule book
4. All Targets should be placed so that rounds fired at the targets will impact the protected area of the backstop
5. Rifle targets must be within 5 meters of the backstop
6. Plastic bottles may be used, but you MUST remove all plastic waste.
7. Targets showing images of people are not allowed
8. Reactive targets may be used including those showing zombies and caricatures.
9. Self-sealing (self-healing) targets are allowed.



10. Binary explosive targets are banned.
11. Firebird reactive targets are banned
12. Rolling style targets that roll on the ground are not allowed.

Aerial targets and Clays

1. Clay launchers can only be used at the fixed shotgun position.
2. Clay shooting at other locations can occur only during club organized shoots.
3. Hand clay launchers and hand thrown targets are not allowed.
4. Clay targets may be placed in the backstop; but must be no higher than 4 feet from the ground, and placed in the protected area of the backstop.

Steel targets

are allowed as follows:

1. During an organized club shoot.
2. Distance between shooter and metal targets must be a minimum of 10 meters.
3. Swing style .22 rim fire factory made targets allowed on appropriate ranges only and must be used with rim fire firearms. The target must be within 1 meters of the back stop.
4. Permanently fixed club targets when fitted on rifle and pistol ranges.
5. Club steel plate targets on approved pistol ranges when a qualified Range Officer is present.
6. Club steel only, no members may bring their own steel, unless approved by the Club Executive and a qualified Range Officer is present.



Range Safety

1. Main club and range flag must be up before any firearms are uncased or handled.
2. No one may go down range unless all firearms are unloaded, holstered, racked or cased
3. Firearms may only be inspected, examined or repaired at a shooting point with the muzzle pointing down range, while the range is "HOT". Nobody can be down range while firearms are being handled
4. Firearms must not be uncased or encased in the parking lot.
5. Pistols may only be used on rifle ranges at a distance of 20m or less from the back stop
6. Restricted firearms must be taken from a vehicle unloaded, with a trigger lock, and in a locked carrying case.
7. Non Restricted firearms when taken from a vehicle must be unloaded, and either in a case or blanket with a trigger lock fitted. In a case is recommended for member's peace of mind."

Round safety and ricochet hazards

1. All rounds fired should impact the protected area of a backstop
2. Members must place all targets such that rounds impact the protected area of the backstop, see item 4 below.
3. If a member wishes to reduce the distance to a target, the member should move ALL firing points forward with the agreement of others shooting on that range except rifle 5.
4. On horse shoe pistol berms, targets may be positioned away from the back stop. Target height and position should be adjusted to ensure all rounds impact the protected area of the backstop.
5. Do not shoot any metal targets that have fallen over.
6. Clay launchers can only be used at the fixed shotgun position, aerial targets at other locations only during club organized shoots.



Safety equipment

It is the member's legal responsibility to ensure:

1. Ear and eye protection are worn at all times when shooting is taking place
2. Members are legally required to ensure that guests wear proper ear and eye protection.
3. Members and guests may use any club safety equipment that is available in the club house
4. If there is no eye and ear protection available, shooting may not proceed



Range Officer Duties outline

1. All qualified Range Officers are required to display their ID card at all times.
2. Range Officer main duty is safety; the RO has the final say.
3. Second duty is etiquette.
4. If there are 2 or more shooters a Range Officer is required if there are 3 or more shooters then the **Range Officer** CANNOT shoot at the same time as the others, this means "NONE SHOOTING RO".
5. The commands are listed on the club notice board.
6. The procedure is most important not the exact wording.
7. Range hot, safety equipment on, load and make ready, unload and show clear, clear to move forward.
8. To ensure that all shooters are on the same page.
9. Etiquette is to show consideration for other users, some examples are:
 - Do not put someone doing 22 precision next to someone doing .45 speed shoots.
 - Sighting in is a slow process, and others should not be restricted in their disciplines.
 - Help to shelter new younger users from the extremes of large caliber rifles.
11. If you think the Range Officer is wrong, unload, rack or case your firearm and discuss. If you are not satisfied, get clarification from a Director.
12. Failure to obey Range Officer instructions can result in disciplinary action.



Caliber restrictions

If you are unsure if you can fire a particular caliber ask The Executive or a Club Range Officer before you use it

1. Most powerful rifle caliber allowed is the equivalent of 338 Lapua magnum.
2. Larger lower velocity calibers (e.g. 4570, 444 magnum are allowed).
3. .50 caliber Barrett not allowed.
4. Pistol calibers like SW .50 are allowed as is .50 AE.
5. Centre fire Pistols in carbine mounts and pistol carbines may not be used on pistol ranges.
6. Tracer and armor piercing ammunition use is not allowed at MVRRC.

Range Caliber table

Range	Rim fire Rifle	Pistols	Pistolcarbine	Birdshot(2)	Buck- shot (3)	slugs	Centre fire rifle
Rifle 1	OK	Note 1	OK	OK	OK	OK	OK (5)
Rifle 2	OK	Note 1	OK	OK	OK	OK	OK (5)
Rifle 3	OK	Note 1	OK	OK	OK	OK	OK (5)
Rifle 4	OK	Note 1	OK	OK	OK	OK	OK(5)
Rifle 5	NO	NO	NO	NO	NO	NO	OK (4+5)
Fixed clay	NO	NO	NO	OK	NO	NO	NO
Pistol 1	OK	OK	NO	OK	OK	NO	NO
Pistol 2-2A	OK	OK	NO	NO	NO	NO	NO
Pistol 3	OK	OK	NO	OK	NO	NO	NO

Note 1- Pistols may only be used on rifle ranges at ranges of 20metres or less.

Note 2 – Bird shot is size 7 1/2 or smaller.

Note 3 – Buckshot is #4 buckshot or larger.

Note 4 – May only be shot at 400m through one of the two fixed firing benches

Note 5 - Centre fire rifles minimum legal distance from backstop is 25m (legal requirement for ricochets)



Events

IPSC practice will be on the 1st Sunday of each month, and will have priority on 2 pistol ranges. Normally pistol range 1 and 3 are set aside for this purpose.

Clay shoots on the 2nd Sunday of each month have priority over all ranges.

Club safety briefings are carried out on the 3rd weekend Sunday of each month, and will require the use of two or three pistol ranges.

Members should co-operate when asked for consideration during the monthly briefing.



Disciplinary guidelines

The club disciplinary guidelines are as follows:

1. Any breach of club safety rules will be investigated and acted upon by the MVRRC Executive.
2. If a Member is advised that they are breaching club safety rules, they should stop the alleged breach immediately.
3. Any alleged breach of safety guidelines should be reported to a member of the Executive or the club email with as many details as possible.
4. The action taken by the Executive will depend on the severity of the breach and any previous history of breaches by that Member.

Disciplinary actions available to the Executive

The action taken by the Executive will normally consist of either:

1. A verbal or written warning for minor breaches of safe shooting practice
2. Suspension from the club, for more serious breaches or repeated minor breaches.
3. Barred from club membership for serious breaches of safe shooting practice.
4. If the breach is considered serious enough, the member concerned may be reported to the authorities as a person unfit to have a PAL.

Safety breaches

Any member who witnesses a safety infraction should advise the member

concerned to desist (if safe to do so), collect details on an Incident form which are available in the club house, and in any event advise the Executive.

If when dealing with any incident a member feels the situation is becoming in any way confrontational they should stop, leave the area and report to the Executive.

Safety breaches include the following:

1. Muzzle sweeping.
2. Failure to follow the instructions of a Range Officer.
3. Failure to appoint an RO.
4. Accidental discharge or negligent discharge
5. Failure to carry documentation, or show documentation when requested by a club official.
6. Failure to log in, display flags or signs.



7. Locking the gate whilst shooting.
8. Inappropriate handling of firearms, anywhere on the range.
9. Handling firearms while members are forward.
10. Taking uncased firearms into the clubroom except as specified.
11. Handling firearms in the parking lot.
12. Failing to correctly position targets as per range requirements.
13. Failing to ensure round impact the protected area of the backstop.
14. Shooting aerial targets in unapproved locations.
15. Causing ricochets by using inappropriate targets.
16. Placing targets above the protected area of the backstop or placing targets at the top of the backstop.
17. Cross shooting (shooting across ranges).
18. Using steel in a manner not specified in the rules.
19. Using improper targets.
20. Shooting the calibers that are not allowed on ranges (e.g. centre fire rifle on pistol ranges).
21. Using a holster for live fire without the appropriate qualification.
22. Bringing equipment onto the range without the proper license (e.g. using prohibited equipment without a prohibited license).
23. Firearms in an unsafe condition.
24. Moving firearms between ranges whilst loaded.
25. No incapacitation through alcohol or drugs on the range at any time.
26. No Alcohol before or during shooting or while firearms are legally secured for transport.
27. Causing damage to club property.
28. Shooting Binary Exploding Targets, Firebird or any other exothermic/explosive targets.
29. Placing targets on safety or wooden safety baffles.
30. Shooting rolling style targets.
31. Walking up or over berms



General Range Safety Rules

01. Aerial targets only allowed on fixed shotgun range
02. If there are more than 2 shooters, the RO cannot be on the firing line
03. Targets must not be placed on safety baffles
04. Eye and Ear protection must be worn
05. Firearms must be unloaded; holstered, racked or cased if not in use.
06. Members are responsible for their Guests and must be on the same Firing line as their Guests
07. No one may go down range unless all firearms are unloaded, holstered, racked or cased
08. When handling firearms keep muzzle in a safe direction, a safe direction is Downrange or Up
09. Obey the commands of a Range Officer
10. On the command "cease fire" all shooters stop shooting take their finger off the trigger keep the muzzle in a safe direction and await the orders of the RO



Specific Range Safety Rules

Pistols may only be used on Rifle ranges at distances of 20metres or less from the backstop.

Rifles must only be used at a distance of 25m or greater from the backstop –A legal requirement

Rifle Range 1 Firing Line 1(300)

At Firing line 1 engage targets at 300 yards only from a seated position through the port

Flags must be up at Firing line 1 and 2 on Rifle Range 1 and Fixed Shotgun

Fixed Shotgun cannot be used at the same time as Rifle Range 1. First come, first served

Only one firing line on Rifle Range 1 can be in operation, first come first served

When shooting, muzzle must stay within the boundary of the shooting port

Rifle Range 1 Firing Line 2(200)

At Firing line 2 engage targets from a seated or kneeling position at 200 yards only

Flags must be up at Rifle 1, Firing line 1 and 2 and fixed shotgun

Fixed Shotgun cannot be used at the same time as Rifle Range 1. First come, first served.

Only one firing line on Rifle Range 1 can be in operation, first come first served

When shooting, muzzle must stay within the boundary of the overhead baffle.

Rifle Range 2 inside (100yards)

Firearms can be fired from seated position only at targets 1 and 2 range 100 Yards

Main flag must be up plus indoor flag and sign displayed

If Rifle 2 and 2A are both in use the window between the ranges must be open

Rifle Range 2A outside (100/200yards)

Firearms can be fired standing or kneeling at Firing Line Standing (S) at 100 yards

Firearms can be fired sitting or kneeling at Firing Line1 and Firing Line2 100/200 yards

Firearms can be fired prone only at Firing Line 3 100 and 200 yards

Main flag must be up

Muzzle must stay within the boundary of the overhead baffle

If Rifle 2 and 2A are both in use the window between the ranges must be open

Rifle Range 3 outside (50 yards)

At firing point 1 engage targets at 50 yards from a seated or kneeling position only, through the port

Flag must be up

When shooting, muzzle must stay within the boundary of the overhead baffle

Rifle Range 4 Firing line 1

Firearms can be fired at 100 yards only from seated at targets 1 and 2 through the overhead baffle

All range 4 flags must be up

Only one firing line can be in operation, first come first served

When shooting, muzzle must stay within the boundary of the overhead baffle



Rifle Range 4 Firing line 2

At Firing Line 2 engage targets 1 and 2 at 50 yards only from a seated position

Shots may be taken from a standing or kneeling position forward of Firing Line 2; at targets 1 and 2 the range must be between 25 yards and 50 yards from the backstop

All range 4 flags must be up

Only one firing line can be in operation, first come first served

Rifle Range 4 Firing line 3 Pistol 4

Pistols can be used at a range of 20m or less only

All range 4 flags must be up

Only one firing line can be in operation, first come first served

Rifle Range 5 –closed

Pistol Ranges

You may use rim fire rifles on ALL pistol ranges.

Shotguns loaded with shot sizes 7 ½, 8, 9 may be used on all pistol ranges except Pistol 2 and 2A.

NO SLUGS allowed on pistol ranges.

All rounds must impact the protected area of the backstop.

Pistol Range 1

Firearms can be fired from the platform seated, kneeling standing

Firearms can be fired from a position forward of the

Platform at a range of 20 meters or less

Range Flag must be up

No Centre fire rifles or Pistol carbines

Pistol Range 2

Firearms can be fired from cover position seated or standing

Firearms can be fired outside, shooter must be forward of the end of both side berms at a range of less than 20 metres

Range Flag must be up

No Centre fire rifles shotguns or Pistol carbines

Pistol Range 2A

Firearms can be fired from the platform seated or standing.

Firearms can be fired outside from forward of the Platform

Range Flag must be up

No Centre fire rifles, shotguns or Pistol carbines



Pistol Range 3

Prone platform

Rounds fired from the prone platform from prone only and targets must be engaged through the port

Pisto3 A (Right hand side)

Targets may be engaged from a distance of less than 20 m

Steel targets may only be engaged when inside the area protected by the metal cladding

The range between shooter and steel must be at least 10 meters

Pistol 3 (Left hand side)

Targets may be engaged from the inside position

Targets may be engaged outside at range of less than 20m

Main Range and enclosed firing line flags must be up

No Centre fire rifles or Pistol carbines

Pistol 5

Firearms can be fired from inside

Firearms can be fired outside at a range of less than 20m

Main Range flag must be up

No Centre fire rifles or Pistol carbines

Fixed Shotgun Position

Clays launched from a fixed launcher can be shot from the Firing Line (No hand clay throwers)

Clays must be launched directly down range

Rifle 1 cannot be used at the same time as Fixed Shotgun. First come, first served

Range flags must be up on fixed shotgun and both firing lines on Rifle 1

No Pistols, Rifles or Pistol carbines



MVRRC Incident Occurrence form

For use by Club Qualified Range Inspectors.

Level 1. Incident Occurrences do not require an "Incident Occurrence Form". However, all level 1.

Incidents must be reported to the club president with a description of the incident, individuals involved, and immediate action taken (Please refer to incident level classifications on reverse of sheet)

Incident Occurrence Level:

Level 1.

Level 2.

Level 3.

(Please circle, refer to incident level classification on reverse of sheet)

Date of Incident : _____. Time of Incident : _____.

Witness(s) name and contact information: _____. Phone#. _____

Range Type and Number: _____. (Refer to range diagram on reverse of sheet)

Individuals involved:

1. _____ membership # _____

2. _____ membership # _____

If the RSO/RI is unable to obtain the name(s) or any other relevant information from the individuals involved in the incidence, document:

The most recent name(s) in the sign in book: _____

Description of individual(s): _____

Make, model, and license plate of all vehicles in the parking area: _____

Incident Occurrence: Level 3.

(Brief factual description of occurrence)

Immediate Action Taken

Range Officer/Range Inspector

Signature _____ Membership # _____



MVRRC Incident Occurrence Levels

Level 1.

Level 1. Incidents “do not” require the filing of an Incident Occurrence Form.

A “minor” club rule, damage, or range procedural or safety issue has been identified. The individuals involved have been made aware of the issue. The activity has stopped and the Range Officer or Range Inspector in their evaluation of Level 3, the situation has concluded that the unsafe activity(s) is not reasonably likely to reoccur. The issue can be considered closed. However, the incident occurrence, individuals involved, and immediate action taken, must be reported to the club president.

Level 2.

Level 2. Incidents “may require” the filing of an Incident Occurrence Form on the evaluation and discretion of the RSO and/or RI

“Potential Danger” or safety concern(s) poses a risk to the safety of the individuals involved, other range members or the public.

The individuals involved have been made aware of the issue and the potential dangerous situation has been corrected. If the individual(s) involved has ceased the unsafe activity and have agreed to proceed in a safe manner consistent with club procedure the RSO or RI after evaluation of the situation may elect not to file an Incident Occurrence Form. However, the “Incident”, “individuals involved” and “immediate action(s) taken” must be reported to the club President.

Level 3.

Level 3. Incidents “require” the filing of an Incident Occurrence Form by the RSO and/or the RI

“Immediate danger”, the situation poses the risk of injury for the individuals involved, other range members, and the general public.

The individual(s) involved have been made aware of the issue and the immediate dangerous situation has been corrected. Individual(s) involved may be asked to leave the range property immediately.

“Stay calm, do not become confrontational”



Acknowledgement sheet

This is to acknowledge that I have read and understood the MVRRC range safety rule booklet and agree to abide by the rules set out. Please note that any safety breach will be investigated and may result in disciplinary action. This can include a warning, temporary or permanent expulsion from the club.

Add an extra sheet for any additional signatures if required.

This acknowledgement sheet must be signed by each Member (that is each individual who is a Member or part of a family Membership must sign this sheet).

The completed sheet should be returned to the club mailing address:

P.O. Box 150, Middle Musquodoboit, Nova Scotia, B0N 1X0

Members Acknowledgement

Number Print name Signature

- 1.
- 2.
- 3.
- 4.
- 5.
- 6.
- 7.
- 8.
- 9.
- 10.
- 11.
- 12.
- 13.
- 14.